

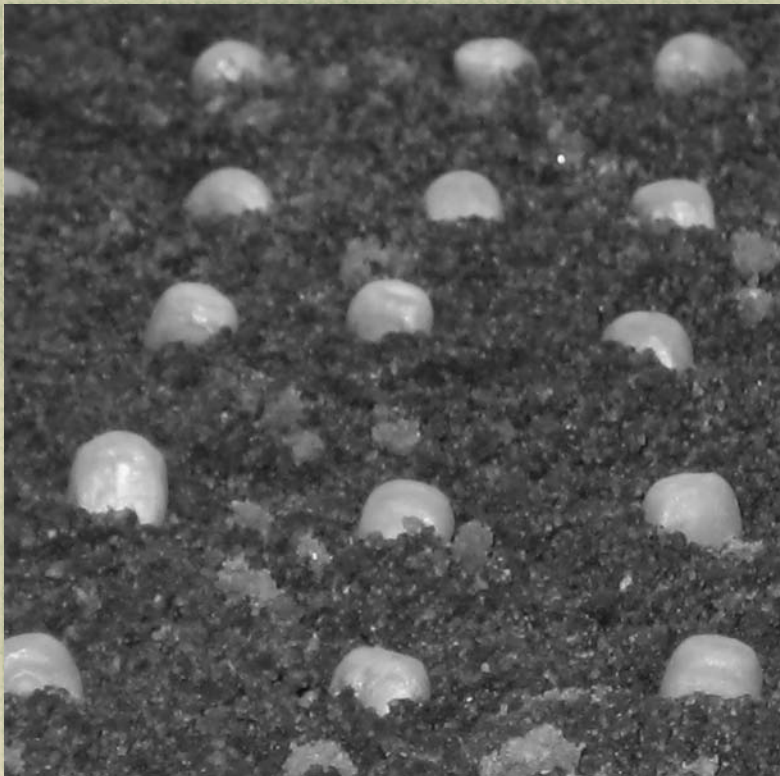
Seed Technology

An International Journal Serving Seed Scientists and Technologists

Volume 31

2009

Number 1



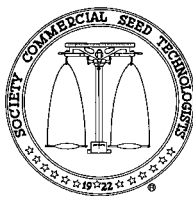
ISSN: 1096-0724

Published Jointly by the Association of Official Seed Analysts
and the Society of Commercial Seed Technologists

Seed Technology

*An International Journal
Serving Seed Scientists and Technologists*

Volume 31, Number 1 • 2009



Published jointly by:

ASSOCIATION OF OFFICIAL SEED ANALYSTS
SOCIETY OF COMMERCIAL SEED TECHNOLOGISTS

Editor-in-Chief:

Dennis M. TeKrony
Professor Emeritus
Plant and Soil Sciences Department
University of Kentucky
Lexington, KY 40546-0312
USA

Editor:

Cindy Finneseth
Seed Testing Coordinator
Division of Regulatory Services
College of Agriculture
University of Kentucky
103 Regulatory Services Building
Lexington, KY 40546-0275

Seed Technology

THIS JOURNAL is co-sponsored by the two predominant organizations in North America with a direct interest in seed technology: the Association of Official Seed Analysts and the Society of Commercial Seed Technologists.

ASSOCIATE EDITORS:

Riad Baalbaki, California Dept. of Food and Agriculture, Sacramento, CA, USA

Frank Bonner, Retired, USDA, Forest Service, Starkville, MS, USA

Kristina Connor, USDA-Forest Service, Auburn, AL, USA

Sabry Elias, Oregon State University, Corvallis, OR, USA

Robert L. Geneve, University of Kentucky, Lexington, KY, USA

Deborah Meyer, California State Seed Laboratory, Sacramento, CA, USA

Gary V. Munkvold, Seed Science Center, Iowa State University, Ames, Iowa, USA

Amanda Patin, SGS Mid-West Seed Services, Inc., Brookings, SD, USA

Fawad Shah, Washington State Dept. of Agriculture, Yakima, WA, USA

Richard Vierling, Indiana Crop Improvement Assn., Lafayette, IN, USA

Greg Welbaum, Virginia Tech, Blacksburg, VA, USA

Yujia Wu, USDA AMS Seed Regulatory and Testing Branch, Gastonia, NC, USA

AIMS AND SCOPE – *Seed Technology* is an international journal containing scientific and technological papers in all areas of Seed Science and Technology. The emphasis is on applied and basic research in seed physiology, pathology and biology that may relate to seed development, maturation, germination, dormancy and deterioration. Studies on seed production, sampling, testing, conditioning, distribution and storage are also included. Short communications from seed analysts and technologists are encouraged and will be published as Seed Tech Notes. These notes include new techniques, standardization of laboratory tests and documentation of anatomical and pathological observations of seed and seedling development. The journal also includes timely review articles of seed technology that may relate directly to the seed industry.

TYPES OF PAPERS – Original research papers, review articles and Seed Tech Notes are reviewed for publication. Manuscripts should be typed, double spaced and sent to the Editor electronically as a Word or WordPerfect document. Potential authors should note that there are no page charges and reprints can be ordered directly from the printer at a minimal fee. Refer to the last pages of this volume for Instructions to Authors for manuscript and Seed Tech Note submissions.

SUBSCRIPTIONS – *Seed Technology* is published one to two times annually. The annual subscription price for individuals is \$75.00 in North America and \$85.00 outside of North America; university and library annual subscriptions are \$125.00 in North America and \$135.00 outside of North America. All subscription prices are in US dollars and include postage. Subscriptions should be sent direct or through a bookseller to: Anita Hall, Executive Director, Society of Commercial Seed Technologists, Inc., 101 East State St., #214, Ithaca, NY 14850, USA, www.seedtechnology.net.

EDITORIAL

THE MISSION OF Seed Technology is to enhance seed science and the profession of seed technology by communicating advances in basic and applied research to an international audience. This issue presents a diversity of subject matter from authors in the United States, India, Brazil, Iran, and Nigeria. Full-length papers and Seed Tech note topics range from seed conditioning and enhancements to environmental and genetic influences to germination and dormancy in agronomic, forestry and horticultural crops.

An exciting change you will notice in this edition of the journal is that we are now printing article abstracts in additional languages. International authors are encouraged to submit an abstract in their native language supplemental to the English abstract. The journal committee and editorial staff firmly believe this consideration will broaden the utility of the journal, especially among the international seed community.

Another improvement we have planned for the near future is electronic storage and distribution of past issues of Seed Technology. All prior issues (1976–present) are now in electronic format and we currently plan to make them available for purchase as a compendium in CD format. Additional information as well as pricing will be available in the next few months on the journal website (<http://www.seedtechnology.net/journal.htm>).

Our journal continues to be an affordable means to publish and explore current advances and issues in seed science and technology. To ensure consistent and timely delivery of a dynamic, affordable publication, the journal committee is exploring limited advertisements and sponsorships in the Journal. For more information regarding this potential opportunity, refer to the journal website.

We continue to welcome manuscript submissions in the areas of applied and basic research in seed physiology, technology, pathology and biology. We always welcome any comments and suggestions to improve the journal as we serve the authors and readers of Seed Technology.

Dennis M. TeKrony Cindy Finneseth
Editor-in-Chief Editor

COVER ILLUSTRATION: Corn (*Zea mays*) planted in the saturated cold test, a routine laboratory test for determining seed vigor.

Seed Technology

Instructions to Authors

Seed Technology is an international journal that publishes original papers, review articles, technical notes and symposia in all areas of seed science and technology. This includes information from applied and basic seed research in physiology, pathology and biology for all plant species. The journal relates to individuals interested in seed production, sampling, testing, conditioning, distribution and storage of agronomic, horticultural and forest seed crops. Papers are accepted on the understanding that they have not been published or submitted to any other scientific journal. The journal is published one to two times per year and is available as paper copies by contacting: Anita Hall, Executive Director, Society of Commercial Seed Technologists, Inc., 101 East State St., #214, Ithaca, NY 14850. Subscription information and order forms are available online at: <http://www.seedtechnology.net/journal.htm>.

Manuscripts must be clearly written using proper English. If English is not the primary language of the author, the manuscript should be reviewed by someone proficient in English prior to submission to the journal. Manuscripts should be submitted via e-mail as an electronic document in MS Word or WordPerfect for Windows. See "Guidelines for Submission" at the end of the instructions. Five types of submissions will be considered for publication:

- a. **Full-length manuscripts** should report new information to the subject area or expand on established knowledge to contribute additional information of value. Manuscripts undergo peer review to determine that adequate scientific methods were applied, that interpretations and conclusions are valid, and that all aspects of the study are adequately presented.
- b. **Seed Tech Notes** are appropriate for the reporting of seed laboratory or seed production research that may not justify a full paper, but provide important information of potential practical importance. This may include new techniques or developments, standardization of old techniques or anatomical, pathological or other documentation of seed or seedling development. The requirements for such notes are described below.
- c. **Technical Papers** presented orally or by poster at the annual meeting of the Association of Official Seed Analysts (AOSA) and Society of Commercial Seed Technologists (SCST) are invited, which cover topics of general interest to the seed biologist or technologist.
- d. **Symposia** or workshops presented to the AOSA/SCST membership may be recorded in the journal for future reference. Organizers should prearrange with the Editor to receive papers from the presenters of symposia and workshops within a specified timeframe for inclusion in a single journal issue.
- e. **Review articles** are welcomed by special prior arrangement with the Editor or Editor-in-Chief. Reviews should cover a summary of a seed biology or seed technology topic or an evaluation of a seed science or technology related publication. The content of reviews should have a strong technical and/or scientific base.

INSTRUCTIONS FOR FULL LENGTH PAPERS

Manuscripts should be arranged in the following order: **Title** (no separate title page), **Author(s)**, **Abstract**, **Text**, **Acknowledgments**, **References**, **Tables**, **Captions for Figures** (separate page) and **Figures**. The title should be concise (10 to 12 words) but informative, containing key words which describe the subject matter for use in abstracting systems. The name of the author(s) should be placed below the title with an asterisk (*) after the name of the corresponding author.

The **abstract** should concisely summarize the entire scope of the paper including findings and conclusions without reference to text or figures. **All categories of manuscripts or papers submitted to the journal must have an abstract.** It should appear immediately below the title and authors and consist of not more than 250 typed words. Authors may provide a translation of the abstract in one additional language, which will be printed in the journal following the primary abstract in English. Availability of abstracts in alternate languages should be discussed with the Editor early in the submission process. Accuracy in regard to content and grammar of the second abstract is the responsibility of the corresponding author. Do not include a list of key words.

The **text** of the manuscript should normally have the subject matter grouped under the following major headings: **Introduction**, **Materials and Methods**, **Results**, **Discussion** (Results and Discussion may be combined), **Acknowledgments** (optional) and **References**. Main headings are centered on each page and capitalized in bold type. Secondary headings begin at the left margin (do not indent) with the first letter capitalized and the entire heading in bold print. Use of a previous issue of the journal as a guide to format is recommended.

Author-Paper Documentation. Author-paper documentation is a single paragraph at the bottom of the first page (under abstract). The first sentence lists the authors (without professional titles) and their complete addresses. If the author has moved, provide the current address. Always end the author-paper documentation with: *Corresponding author (e-mail address of corresponding author). Received _____.

Style Manual. *Scientific Style and Format: The CBE Manual for Authors, Editors, and Publishers*, 6th edition, prepared by the Style Manual Committee of the Council of Biology Editors and published by the Cambridge University Press should be followed for writing papers submitted to *Seed Technology*. *The Publications Handbook and Style Manual* of the American Society of Agronomy can also be used as a detailed guide for both paper and electronic manuscript preparation and can be accessed on line at

<https://www.crops.org/publications/style/>

Abbreviations. Use standard abbreviations (for example, Fig., RH, °C) listed in *Scientific Style and Format* without definition. Other abbreviations should be defined at first usage and may be used thereafter without further definition. Names of states, provinces and countries should be abbreviated following city names, using appropriate abbreviations of the postal service in that country.

Units. Metric units must be used for all measurements and the SI system (Système International d'Unités) used insofar as possible.

Numbers. Use Arabic numerals for all numbers with two or more digits and for all measurements such as time, weight, or degrees except when the number is the first word in a sentence. Spell out numbers when they are the first word in a sentence or when they are less than 10 and not measurements, except when in a series in which one figure has two or more digits. Decimals should be expressed using a period (5.05, for example). The percentage sign should be used in conjunction with a number (5%), but percentage should be written in full when used as a noun (germination percentage). Dates should be given as 2 December, 1938, for example.

Nomenclature. Species should be described by their scientific ('Latin') names. At first mention in the main text the full binomial and authority must be given, but subsequently the genus should be abbreviated to its initial letter and the authority omitted. Authorities are not quoted after Latin names in the title or abstract. Crop varieties should be identified by single quotation marks, for example, 'Ranger' alfalfa (*Medicago sativa* L.)

Tables. Tables should be numbered consecutively with Arabic numbers and should be reduced to the simplest form. Each table should be typed on a separate page from the main text. Table headings should be brief but complete and self-contained. Use the following symbols for footnotes, in this order: †, ‡, §, ¶, #. Asterisks are used only to indicate statistical significance, with * and ** representing significance at the 0.05 and 0.01 probability levels, respectively. Do not duplicate table information in figures.

Figures. All electronic images should be submitted in their native file format without insertion into a .DOC or text file such as MS Word or WordPerfect. This is necessary because any graphic files embedded into a text file must be extracted for use with layout software during typesetting. Graphic files extracted from a text file are not as useable as the form they were in before insertion. Examples of acceptable graphic file types would be .TIF, .JPG, .BMP and .EPS. Images should be high resolution without compression. Alternatively, high quality original prints of photographs or halftone reproductions may be provided with good dark and white contrast. Photographs should only be submitted if they are essential for understanding the manuscript. Prepare drawings for graphs and charts with laser printer output on smooth white paper. For computer generated line art, submit original printouts, not poor quality copies. All figures should be of sufficient size and quality to allow for reduction by half or more for printing. Lettering should be kept at a minimum in graphs. All lettering, symbols and lines must be large enough, clear enough and thick enough to still be easily read and prominent after reduction. Preferred symbols for line art figures are black and white open and closed squares, circles and triangles. Do not use colors, shades of gray, or fine screens or patterns to fill bars on graphs or wedges on pie charts. Use solid black or white, well-spaced parallel lines, widely spaced dots, or other black and white line art methods. Again, any patterns and lines should be able to withstand reduction

by half or more. Label the back of each figure with the name of author and figure number. Figure captions should be brief, self contained and listed consecutively on a separate sheet at the end of the manuscript.

Acknowledgment. This section lists institutional sponsors with identification of the research project including granting agency recognition, if appropriate. This segment can also be used to thank anyone who was instrumental in or contributed to the completion of this study.

References. Either the author-year or numbered notation may be used in the text. Citations by authors in the text should appear as Smith (1996) or (Smith, 1996). Use “et al.” each time when there are three or more authors for a reference in the text, but give all authors in the reference list itself. In the reference list, arrange all published citations alphabetically by author: for example, last name and then initials of the first author, with each subsequent author listing arranged with initials/name first and then last name. Citations should include names of all authors, year, complete title, abbreviated journal title, volume number and inclusive pages. Cite personal communication and unpublished work only in the text, not in the reference list. Examples of acceptable references are:

- Koning, G., D.M. TeKrony, T.W. Pfeiffer and S.A. Ghabrial. 2001. Infection of soybean with soybean mosaic virus increases susceptibility to *Phomopsis* spp. seed infection. *Crop Sci.* 41: 1850–1856.
- Bernard, R.L. and M.G. Weiss. 1973. Qualitative genetics. p. 117–154. *In Soybeans: Improvement, production, and uses.* B.E. Caldwell, R.W. Howell, J.W. Judd and H.W. Johnson, (eds.) 1st ed., Agron. Monogr. 16. ASA, CSSA, and SSSA, Madison, WI.
- Fehr, W.R. and C.E. Caviness. 1977. Stages of soybean development. Spec. Rep. 80. Iowa Agric. Home Econ. Exp. Stn., Iowa State Univ., Ames.
- McGee, D.C. 1992. Soybean diseases. Am. Phytopathol. Soc., St. Paul, MN.
- AOSA. 2005. Rules for testing seeds. Assoc. Offic. Seed Anal., Las Cruces, NM.

It is always preferred for papers to have references, but some papers based on presentations or workshops may be acceptable without them by prior arrangement with the Editor.

Proofs, publication charges and reprints. One set of page proofs in Adobe Acrobat format will be returned to the corresponding author by e-mail attachment. Corrections should be restricted to printer’s errors and returned to the Editor promptly. *Seed Technology* does not require page charges, however reprints can be ordered from the publisher when returning corrected proofs.

GUIDELINES FOR SUBMISSION

Initial submission should be by e-mail attachment. The manuscript should be typed, double spaced with ample margins (at least 4.0 cm on each side) on one side of line-numbered paper (approximately 21 x 28 cm) to include the text of the manuscript; all pages should be numbered consecutively. All tables and figures should be typed on separate numbered pages from the main text in an

acceptable format. Macintosh and Windows versions of MS Word or Word-Perfect may be used for submission. If files are submitted as e-mail attachments, both files can also be accepted in MS-Works, RTF, ASCII, and other formats if the preferred options are not available. **Manuscripts should be e-mailed to the Editor:**

cindy.finneseth@uky.edu

Contact the Editor or Editor-in-Chief if you have questions:

Cindy H. Finneseth, Editor
Seed Testing Coordinator
Division of Regulatory Services
103 Regulatory Services Building
University of Kentucky
Lexington, KY 40546-0275
E-MAIL: cindy.finneseth@uky.edu
PHONE: (859) 257-2785, Ex. 256
FAX: (859) 257-7351

Dennis M. TeKrony, Editor-in-Chief
Plant and Soil Sciences Department
1405 Veterans Drive
429 Plant Science Building
University of Kentucky
Lexington, KY 40546-0312
E-MAIL: dtekrony@uky.edu
PHONE: (859) 257-5020, Ex. 80754
FAX: (859) 257-7874

INSTRUCTIONS FOR *SEED TECH NOTES*, TECHNICAL PAPERS AND SYMPOSIA OR WORKSHOPS

The format for *Seed Tech Notes*, technical papers and presentations from symposia or workshops is as for full length papers insofar as practical. The text headings may be the same as a full paper or may be arranged by **Abstract**, **Experimental Techniques**, **Results and Discussion**, and **References**, if that format is more suitable to the presentation of the material. The Experimental Techniques section will include a brief narrative of those elements normally included in the Introduction and Materials and Methods sections of full length papers. *Seed Tech Notes* and technical papers are usually much shorter and may present only preliminary research data compared to full length papers. These papers should not exceed four pages of printed text and a maximum of two figures, tables or photographs. Papers presented at committee meetings, symposia and workshops not containing cited references or other conventional journal paper elements may be considered for publication if these presentations contain information of a practical nature or general interest in seed biology and technology.

SYMPOSIA PUBLICATIONS

Manuscripts resulting from symposia on seed biology or technology topics will be considered for publication in a single volume of *Seed Technology* by prearrangement with the Editor. Manuscripts may originate from symposia sponsored by the Association of Official Seed Analysts or the Society of Commercial Seed Technologists or from appropriate seed symposia sponsored by other organizations. Symposia organizers desiring to publish a set of manuscripts in *Seed Technology* must solicit the Editor with the following information: (i) title, date and location of the symposium, (ii) the organization affiliated with the symposium, (iii) names, addresses, e-mail and telephone numbers of

symposium organizers and (iv) titles and abstracts for each paper to be considered for publication. Symposia papers are subject to the usual format described above for *Seed Technology* and will be reviewed by the editorial board prior to acceptance for publication.

If these guidelines are not closely adhered to, papers will be returned to authors for revision or released from further consideration for the journal.

Editorial – Dennis M. TeKrony and Cindy Finneseth. 3

REFEREED PAPERS

Cold Test and Saturated Cold Test Reliability for Testing Carryover Corn Seed Treated with Seed-applied Insecticides /
A. Susana Goggi, Daniel Curry, and Jeff Daniels 7

How Variables Like Parent, Seed Size and Desiccation Time Affect Seed Deterioration of *Quercus macrocarpa* L. /
Valasia Iakovoglou, Richard B. Hall, Allen D. Knapp, Manjit K. Misra and Susan A. Duwick. 21

Heritability of Seed Components in “Egusi” Melon (*Colocynthis citrullus* L.) / P. E. Ogbonna 37

Response of Rocky Mountain Juniper (*Juniperus scopulorum*) Seeds to Seed Conditioning and Germination Treatments /
Jill R. Barbour and João P. F. Carvalho. 43

Stratification, Gibberellic Acid, Scarification, and Seed Lot Influence on Rosemary Seed Germination / Angela M. Madeiras, Thomas H. Boyle, and Wesley R. Autio 55

Distinguishing *Glyceria* Species of Western North America /
B. Shaun Bushman, Mohammed Sedegui, Nancy K. Osterbauer 66

Effects of Salinity and Temperature on Germination, Seedling Growth and Ion Relations of Two Lentil (*Lens culinaris*) Cultivars / Asghar Rahimi, Rob Norton, David McNeil and Shahab Maddah Hoseini 76

SEED TECH NOTES

Effect of Pre-sowing Treatments on the Germination of *Pleurospermum angelicoides* (DC.) Cl. / Arvind Bhatt, I.D. Bhatt, Kailash Gaira, Komal Tripathi, R.S. Rawal and Uppeandra Dhar 89

Evaluation of Priming Effects on Sweet Corn Seeds by SVIS /
Francisco G. Gomes-Junior, Vitor H. V. Mondo, Silvio M. Cicero, Miller B. McDonald and Mark A. Bennett 95

Breaking Seed Dormancy of *Clematis ispahanica* Bioss. a Medicinal Plant of Iran / Khorshid Razmjoo, Nahid Khodaeian, Arefeh Razzazi and Ehsan Askari 101

Instructions to Authors 109