

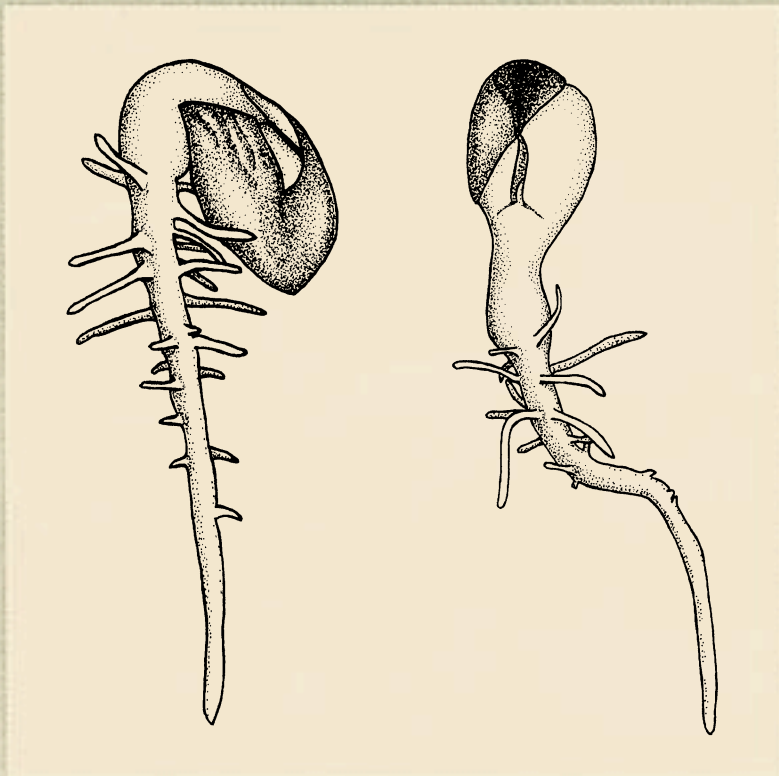
Seed Technology

An International Journal Serving Seed Scientists and Technologists

Volume 28

2006

Number 1



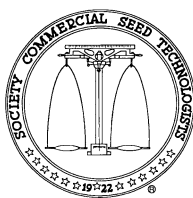
ISSN: 1096-0724

Published Jointly by the Association of Official Seed Analysts
and the Society of Commercial Seed Technologists

Seed Technology

*An International Journal
Serving Seed Scientists and Technologists*

Volume 28, Number 1 • 2006



Published jointly by:

ASSOCIATION OF OFFICIAL SEED ANALYSTS
SOCIETY OF COMMERCIAL SEED TECHNOLOGISTS

Editor:

Wayne R. Guerke
Georgia Department of Agriculture
P. O. Box 1507, 3150 U. S. Hwy. 41 South
Tifton, GA 31793-1507
USA

Associate Editors:

Sabry Elias, Oregon State University, Corvallis, OR, USA
Tim Loeffler, Seminis, Inc., Oxnard, CA, USA
Miller McDonald, Jr., The Ohio State University, Columbus, OH, USA
Deborah Meyer, California State Seed Laboratory, Sacramento, CA, USA
Amanda Patin, Mid-West Seed Svcs., Brookings, SD, USA
Fawad Shah, Washington State Dept. of Agriculture, Yakima, WA, USA
Dennis TeKrony, University of Kentucky, Lexington, KY, USA
Denise Thiede, BioDiagnostics, River Falls, WI, USA
Michael Thompson, BioDiagnostics, River Falls, WI, USA
Richard Vierling, Indiana Crop Improvement Assn., Lafayette, IN, USA

ISSN: 1096-0724

Printed in the USA by Allen Press, Lawrence, KS

Seed Technology

EDITORIAL REVIEW BOARD –

Ken Allison, Canadian Food Inspection Agency, Ottawa, Canada
Mark Anfinrud, Advanta Seeds, W. Fargo, ND, USA
Frank Bonner, USDA-ARS, Starkeville, MS, USA
Kent Bradford, University of California, Davis, CA, USA
Kalyb Brix-Davis, Mid-West Seed Services, Brookings, SD, USA
Ann Bulow-Olsen, Editor, *Seed Science and Technology*, Denmark
Joe Burris, Iowa State University, Ames, IA, USA
D. B. Egli, University of Kentucky, Lexington, KY, USA
Richard Ellis, University of Reading, United Kingdom
Adriel Garay, Oregon State University, Corvallis, OR, USA
Craig Grau, University of Wisconsin-Madison, Madison, WI, USA
Alan Knapp, Kansas State University, Manhattan, KS
Donald Joley, California Dept. of Food & Agriculture, Sacramento, CA, USA
Diane Mesa, J. C. Robinson Seed Co., Waterloo, NE, USA
Susan Meyer, Ecologist, Brigham Young University, Provo, UT, USA
Hiro Nonogaki, Oregon State University, Corvallis, OR, USA
Larry Prentice, Nebraska Crop Improvement Assn., Lincoln, NE, USA
James Smith, USDA/ARS, Stoneville, MS, USA
Rusty Smith, USDA-ARS-CG&PR, Stoneville, MS, USA
Brent Turnipseed, South Dakota State University, Brookings, SD, USA
Irwin Ungar, University of Kansas, Lawrence, KS, USA
Jack Vozzo, Mississippi State University, Starkeville, MS, USA
Loren Weisner, USDA-ARS, Ft. Collins, CO, USA
James Woltz, Syngenta Crop Protection, Basel, Switzerland
Joy B. Zedler, San Diego State University, San Diego, CA, USA

AIMS AND SCOPE – *Seed Technology* is an international journal containing scientific and technological papers in all areas of seed science and technology. The emphasis is on applied and basic research in seed physiology, pathology and biology that may relate to seed development, maturation, germination, dormancy and deterioration. Studies on seed production, sampling, testing, conditioning, distribution and storage are also included. Short communications from seed analysts and technologists are encouraged and will be published as Seed Tech Notes. These notes include new techniques, standardization of laboratory tests and documentation of anatomical and pathological observations of seed and seedling development. The journal also includes timely review articles of seed technology that may relate directly to the seed industry.

TYPES OF PAPERS – Original research papers, review articles and Seed Tech Notes are reviewed for publication. Manuscripts should be typed, double spaced and three copies sent to the Editor. After acceptance, a disk copy of the original hard copy is also required. Potential authors should note that there are no page charges, however reprints can be ordered directly from the printer at a minimal fee. The journal is co-sponsored by the two predominant organizations in North America with a direct interest in seed technology: the Association of Official Seed Analysts and the Society of Commercial Seed Technologists.

SUBSCRIPTIONS & SUBMISSIONS – *Seed Technology* is published one to two times annually. The annual subscription price for individuals is \$75.00 in North America and \$85.00 outside of North America; university and library annual subscriptions are \$125.00 in North America and \$135.00 outside of North America. All subscription prices are in US dollars and include postage. Subscriptions should be sent direct or through a bookseller to: Association of Official Seed Analysts, PMB #411, 1763 East University Blvd., Suite A, Las Cruces, NM 88001, USA. Refer to the last pages of this volume for **Instructions to Authors** for manuscript and Seed Tech Note submissions.

EDITORIAL

I AM PLEASED THAT this volume of Seed Technology includes six full manuscripts and three Seed Tech Notes. Topics covered in the referred papers include mechanical damage to corn and its impact on seed quality, characterization of single-strand-specific nucleases from gram and pea seedlings, seed invigoration techniques in wheat to alleviate salinity stress, methods to determine salt tolerance in vegetables, modeling the effect of temperature on speed of germination in some Hypericum species from Turkey, and observations on fruit and seed maturation in a maple species. The notes include a protocol for detecting small broomrape in red clover, the germination properties of some wild medicinal plants from Iran and breaking seed dormancy of Selinum wallichianum from alpine and subalpine provenances in the Himalaya.

The Instructions to Authors located at the back of the journal have been expanded to invite a broader range of papers to provide more value to subscribers. In addition to full-length, peer reviewed manuscripts and Seed Tech Notes, categories have been added for review articles of seed related publications and presentations of technical papers and posters at meetings as well as material from symposia and workshops. These latter categories should hold the interest of readers as a resource from the valuable information presented at the annual meetings and symposia. These additions are not actually new to the journal, but they were not previously stated in the instructions. It is hoped that these categories might stimulate receipt of a broader range of papers. Furthermore, additional detail on manuscript preparation has been added.

It is with some regret that I advise readers that this is my last issue as Editor of Seed Technology. As I leave the editorship, I offer my appreciation to all Associate Editors and the peer reviewers that have contributed toward making a quality journal. I also express personal thanks to the typesetter, Mr. Charles Chandler, the proofreader, Ms. Amélie Charron, and my assistant, Mrs. Fannie English. Mrs. English is deserving of special recognition for her commitment to produce a quality product and her steadfast support with all technical aspects of the editorship.

I am pleased to announce that Dr. Allen Knapp has accepted the editorship for the journal. The submission of new manuscripts and future correspondence concerning the journal should be sent to Dr. Knapp at the following address:

Dr. Allen Knapp
Editor, *Seed Technology*
Agronomy Department
Iowa State University
Ames, IA 50011-1010

E-mail: adknapp@iastate.edu
Phone: (515) 294-9830
Fax: (515) 294-5506

Wayne Guerke, Editor
Seed Technology 26(1)–28(1)

COVER ILLUSTRATION: 'Georgia Green' peanut, *Arachis hypogaea* L., seedlings showing normal development at day 6 of germination test by D. J. Lionakis Meyer.

Seed Technology

Instructions to Authors

Seed Technology is an international journal that publishes original papers, review articles, technical notes and symposia in all areas of seed science and technology. This includes information from applied and basic seed research in physiology, pathology and biology for all plant species. The journal relates to individuals interested in seed production, sampling, testing, conditioning, distribution and storage of agronomic, horticultural and forest seed crops. Papers are accepted on the understanding that they have not been published or submitted to any other scientific journal.

Manuscripts must be clearly written using proper English. If English is not the primary language of the author, the manuscript should be reviewed by someone proficient in English prior to submission to the journal. It is preferred for papers to be submitted by e-mail as an electronic document in MS Word or Corel WordPerfect or they may also be submitted as a hard (paper) copy. See “Guidelines for Submission” at the end of the instructions. Three types of submissions will be considered for publication:

- a. **Full-length manuscripts** should report new information to the subject area or expand on established knowledge to contribute additional information of value. Manuscripts undergo peer review to determine that adequate scientific methods were applied, that interpretations and conclusions are valid, and that all aspects of the study are adequately presented.
- b. **Seed Tech Notes** are appropriate for the reporting of seed laboratory or seed production research that may not justify a full paper, but provide important information of potential practical importance. This may include new techniques or developments, standardization of old techniques or anatomical, pathological or other documentation of seed or seedling development. The requirements for such notes are described below.
- c. **Technical Papers** presented orally or by poster at the annual meeting of the Association of Official Seed Analysts (AOSA) and Society of Commercial Seed Technologists (SCST) are invited, which cover topics of general interest to the seed biologist or technologist.
- d. **Symposia** or workshops presented to the AOSA/SCST membership may be recorded in the journal for future reference. Organizers should prearrange with the Editor to receive papers from the presenters of symposia and workshops within a specified timeframe for inclusion in a single journal issue.
- e. **Review articles** are welcomed by special prior arrangement with the Editor. Reviews should cover a summary of a seed biology or seed technology topic or an evaluation of a seed science or technology related publication. The content of reviews should have a strong technical and/or scientific base.

INSTRUCTIONS FOR FULL LENGTH PAPERS

Manuscripts should be arranged in the following order: **Title** (no separate title page), **Author(s)**, **Abstract**, **Text**, **Acknowledgments**, **References**, **Tables**,

Captions for Figures (separate page) and **Figures**. The title should be concise (10 to 12 words) but informative, containing key words which describe the subject matter for use in abstracting systems. The name of the author(s) should be placed below the title with an asterisk (*) after the name of the corresponding author.

The **abstract** should concisely summarize the entire scope of the paper including findings and conclusions without reference to text or figures. **All categories of manuscripts or papers submitted to the journal must have an abstract.** It should appear immediately below the title and authors and consist of not more than 250 typed words. Do not include a list of key words. The **text** of the manuscript should normally have the subject matter grouped under the following major headings: **Introduction, Materials and Methods, Results, Discussion, Acknowledgments (optional) and References.** Main headings are centered on each page and capitalized in bold type. Secondary headings begin at the left margin (do not indent) with the first letter capitalized and the entire heading in bold print. Use of a previous issue of the journal as a guide to format is recommended.

Author-paper documentation. Author-paper documentation is a single paragraph at the bottom of the first page (under abstract). The first sentence lists the authors (without professional titles) and their complete addresses. If the author has moved, provide the current address. Always end the author-paper documentation with two statements: “*Corresponding author. Received _____.”

Style Manual. *The Style Manual for Biological Journals* prepared by the Committee on Form and Style of the Council of Biology Editors and published by the American Institute of Biological Sciences (AIBS) should be followed for writing papers submitted to *Seed Technology*. *The Publications Handbook and Style Manual* of the American Society of Agronomy can also be used as a detailed guide for both paper and electronic manuscript preparation and can be accessed on line at

<http://www.asa-cssa-ssa.org/publications/style/>

Abbreviations. Use standard abbreviations (for example, Fig., RH, °C) listed in the AIBS Style Manual without definition. Other abbreviations should be defined at first usage and may be used thereafter without further definition. Names of states, provinces and countries should be abbreviated following city names, using appropriate abbreviations of the postal service in that country.

Units. Metric units must be used for all measurements and the SI system (System International de Unites) used insofar as possible.

Numbers. Use Arabic numerals for all numbers with two or more digits and for all measurements such as time, weight, or degrees except when the number is the first word in a sentence. Spell out numbers when they are the first word in a sentence or when they are less than 10 and not measurements, except when in a series in which one figure has two or more digits. The percentage sign should be used in conjunction with a number (5%), but percentage should be written in full when used as a noun (germination percentage). Dates should be given as 2 December, 1938, for example.

Nomenclature. Species should be described by their scientific ('Latin') names. At first mention in the main text the full binomial and authority must be given, but subsequently the genus should be abbreviated to its initial letter and the authority omitted. Authorities are not quoted after Latin names in the title or abstract. Crop varieties should be identified by single quotation marks, for example, 'Ranger' alfalfa (*Medicago sativa* L.)

Tables. Tables should be numbered consecutively with Arabic numbers and should be reduced to the simplest form. Each table should be typed on a separate page from the main text. Table headings should be brief but complete and self-contained. Use the following symbols for footnotes, in this order: †, ‡, §, ¶, #. Asterisks are used only to indicate statistical significance, with * and ** representing significance at the 0.05 and 0.01 probability levels, respectively. Do not duplicate table information in figures.

Figures. All electronic images should be submitted in their native file format without insertion into a .DOC or text file, such as, MS Word or WordPerfect. This is necessary because any graphic files embedded into a text file must be extracted for use with layout software during typesetting. Graphic files extracted from a text file are not as useable as the form they were in before insertion. Examples of acceptable graphic file types would be .TIF, .JPG, .BMP and .EPS. Images should be high resolution without compression. Alternatively, high quality original prints of photographs or halftone reproductions may be provided with good dark and white contrast. Photographs should only be submitted if they are essential for understanding the manuscript. Prepare drawings for graphs and charts with India ink, dry-transfer lettering system or laser printer output on smooth white paper. For computer generated line art, submit original printouts, not poor quality copies. All figures should be of sufficient size and quality to allow for reduction by half or more for printing. Lettering should be kept at a minimum in graphs. All lettering, symbols and lines must be large enough, clear enough and thick enough to still be easily read and prominent after reduction. Preferred symbols for line art figures are black and white open and closed squares, circles and triangles. Do not use colors, shades of gray, or fine screens or patterns to fill bars on graphs or wedges on pie charts. Use solid black or white, well-spaced parallel lines, widely spaced dots, or other black and white line art methods. Again, any patterns and lines should be able to withstand reduction by half or more. Label the back of each figure with the name of author and figure number. Figure captions should be brief, self contained and listed consecutively on a separate sheet at the end of the manuscript.

Acknowledgment. This section lists institutional sponsors with identification of the research project including granting agency recognition, if appropriate. This segment can also be used to thank anyone who was instrumental in or contributed to the completion of this study.

References. Either the author-year or numbered notation may be used in the text. Citations by authors in the text should appear as Smith (1996) or (Smith, 1996). Use "et al." each time when there are three or more authors for

a reference in the text, but give all authors in the reference list itself. In the reference list, arrange all published citations alphabetically by author: for example, last name and then initials of the first author, with each subsequent author listing arranged with initials/name first and then last name. Citations should include names of all authors, year, complete title, abbreviated journal title, volume number and inclusive pages. Cite personal communication and unpublished work only in the text, not in the reference list. Examples of acceptable references are:

- Koning, G., D. M. TeKrony, T. W. Pfeiffer and S. A. Ghabrial. 2001. Infection of soybean with soybean mosaic virus increases susceptibility to *Phomopsis* spp. seed infection. *Crop Sci.* 41:1850–1856.
- Bernard, R. L. and M. G. Weiss. 1973. Qualitative genetics. p. 117–154. *In Soybeans: Improvement, production, and uses.* B. E. Caldwell, R. W. Howell, J. W. Judd and H. W. Johnson, (eds.) 1st ed., Agron. Monogr. 16. ASA, CSSA, and SSSA, Madison, WI.
- Fehr, W. R. and C. E. Caviness. 1977. Stages of soybean development. *Spec. Rep.* 80. Iowa Agric. Home Econ. Exp. Stn., Iowa State Univ., Ames.
- McGee, D. C. 1992. Soybean diseases. *Am. Phytopathol. Soc.*, St. Paul, MN.
- AOSA. 2005. Rules for testing seeds. *Assoc. Offic. Seed Anal.*, Las Cruces, NM.

It is always preferred for papers to have references, but some papers based on presentations or workshops may be acceptable without them by prior arrangement with the Editor.

Proofs, publication charges and reprints. One set of page proofs in Adobe Acrobat format will be returned to the corresponding author by e-mail attachment. Corrections should be restricted to printer's errors and returned to the Editor promptly. *Seed Technology* does not require page charges, however reprints can be ordered from the publisher when returning corrected proofs.

GUIDELINES FOR SUBMISSION

Initial submission may be on paper, on disk, or by e-mail attachment. The manuscript should be typed, double spaced with ample margins (at least 4.0 cm on each side) on one side of line-numbered paper (approximately 21 x 28 cm). If submitted on paper, when the necessary revisions are made and the paper is accepted, authors must submit a final version on computer disk or by e-mail attachment, accompanied by two identical copies on paper. Both high density 3½-inch PC disks or CD-ROM are acceptable. When initially submitting a manuscript, mail four paper copies or two paper copies with a CD to:

Dr. Allen Knapp	Phone: (515) 294-9830
Crops Research	Fax: (515) 294-5506
Agronomy Department	
Iowa State University	
Ames, IA 50011-1010	

Electronic submission. Manuscripts submitted electronically must follow the same style as a paper submission to include the text of the manuscript and all tables and figures in an acceptable format. MS Word or Corel WordPerfect

are the preferred formats for submitting files on 3½-inch high density PC disk or CD-ROM. If files are submitted as e-mail attachments, both Macintosh and Windows versions of MS Word may be used. Files can also be accepted in MS-Works, RTF, ASCII, and other formats if the preferred options are not available. Contact the Editor if you have questions. Manuscripts submitted by e-mail attachment should be sent to:

adknapp@iastate.edu

INSTRUCTIONS FOR *SEED TECH NOTES*, TECHNICAL PAPERS AND SYMPOSIA OR WORKSHOPS

The format for *Seed Tech Notes*, technical papers and presentations from symposia or workshops is as for full length papers insofar as practical. The text headings may be the same as a full paper or may be arranged by **Abstract**, **Experimental Techniques**, **Results and Discussion**, and **References**, if that format is more suitable to the presentation of the material. The Experimental Techniques section will include a brief narrative of those elements normally included in the Introduction and Materials and Methods sections of full length papers. *Seed Tech Notes* and technical papers are usually much shorter and may present only preliminary research data compared to full length papers. These papers should not exceed four pages of printed text and a maximum of two figures or photographs. Papers presented at committee meetings, symposia and workshops not containing cited references or other conventional journal paper elements may be considered for publication if these presentations contain information of a practical nature or general interest in seed biology and technology.

PUBLICATION OF SYMPOSIA

Manuscripts resulting from symposia on seed biology or technology topics will be considered for publication in a single volume of *Seed Technology* by prearrangement with the Editor. Manuscripts may originate from symposia sponsored by the Association of Official Seed Analysts or the Society of Commercial Seed Technologists or from appropriate seed symposia sponsored by other organizations. Symposium organizers desiring to publish a set of manuscripts in *Seed Technology* must solicit the Editor with the following information: (i) title, date and location of the symposium, (ii) the organization affiliated with the symposium, (iii) names, addresses, e-mail and telephone numbers of symposium organizers and (iv) titles and abstracts for each paper to be considered for publication. Symposium papers are subject to the usual format described above for *Seed Technology* and will be reviewed by the Editor prior to acceptance for publication.

If these guidelines are not closely adhered to, papers will be returned to authors for revision or released from further consideration for the journal.

Editorial – Wayne Guerke 3

REFEREED PAPERS

Impact of Mechanical Damage to Hybrid Maize Seed from Harvesting and Conditioning / S. Adesola Ajayi, Gerhard Rühl and Jörg M. Greef 7

Partial Purification and Characterization of Single-Strand-Specific Nucleases from Gram and Pea Seedlings / Zafar Rasheed 22

Alleviation of Salinity Stress by Seed Invigoration Techniques in Wheat (*Triticum aestivum*) / Shahzad Maqsood Ahmad Basra, Irfan Afzal, Shoaib Anwar, Muhammad Anwar-ul-Haq, Muhammad Shafiq and Kashif Majeed 36

Salinity Effect on Ion Content and Relationship Between Ion Leakage, Growth, and Salinity in Different Vegetable Seeds / Muhammad Jamil, Eui Shik Rha and Mi Suk Han 47

Modeling the Temperature Effect on Days to Germinate Some *Hypericum* Species from Turkey / Cüneyt Çırak, Mehmet Serhat Odabaş, Ali Kemal Ayan and Kudret Kevseroğlu 58

Pattern of Fruit and Seed Maturation in Himalayan Maple (*Acer caesium*) / S. S. Phartyal and R. C. Thapliyal 64

SEED TECH NOTES

Laboratory Test to Detect the Presence of Small Broomrape (*Orobanche minor*) in Red Clover / Sabry Elias, Adriel Garay, Juan Zavala and Stephen Alderman 73

Germination Properties of Some Wild Medicinal Plants from Iran / Mohammad Bannayan, Farsad Nadjafi, Mehdi Rastgoo and Leila Tabrizi 80

Breaking Seed Dormancy of *Selinum wallichianum*, a Medicinal Plant of the Himalaya / Meena Joshi, R. S. Rawal and Uppeandra Dhar 87

Instructions to Authors 93